

IRIS Serial Configuration for Texecom Upload/Download & Alarm Connections:

This document outlines the configuration for both the IRIS dialler and the Texecom Panel required for an upload/download & Alarms over IP via the Serial (RS232) connections.

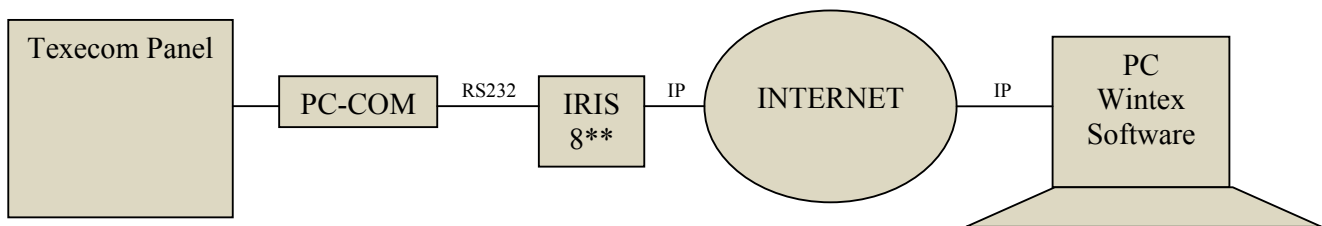
This functionality operates in parallel with the standard IRIS Polling and Alarm Signalling over IP, which operates in conjunction with the standard Texecom PSTN dialler interface.

Direct Serial connection for Alarms + Upload Download.

Equipment Needed:

IRIS 8**
PC-COM (Texecom)

Connections:



Configurations:

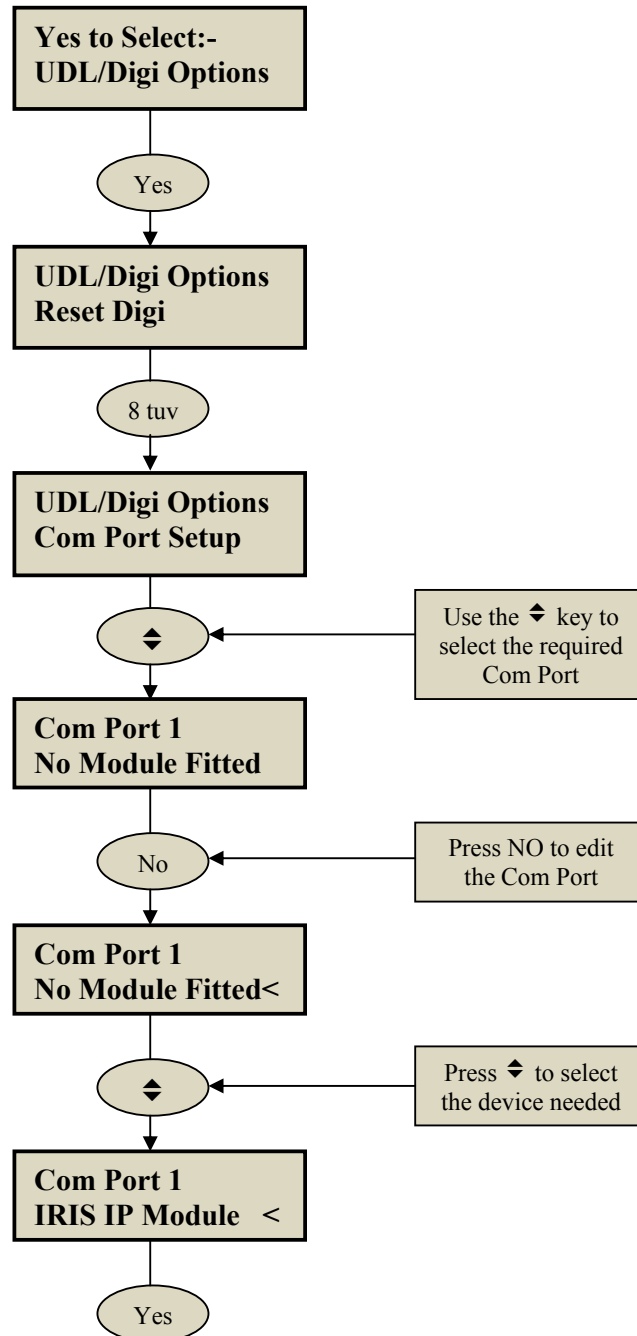
The first thing to note here is that the entire IRIS configurations are loaded from the Texecom Panel settings, which are noted below.

Texecom Panel Site:

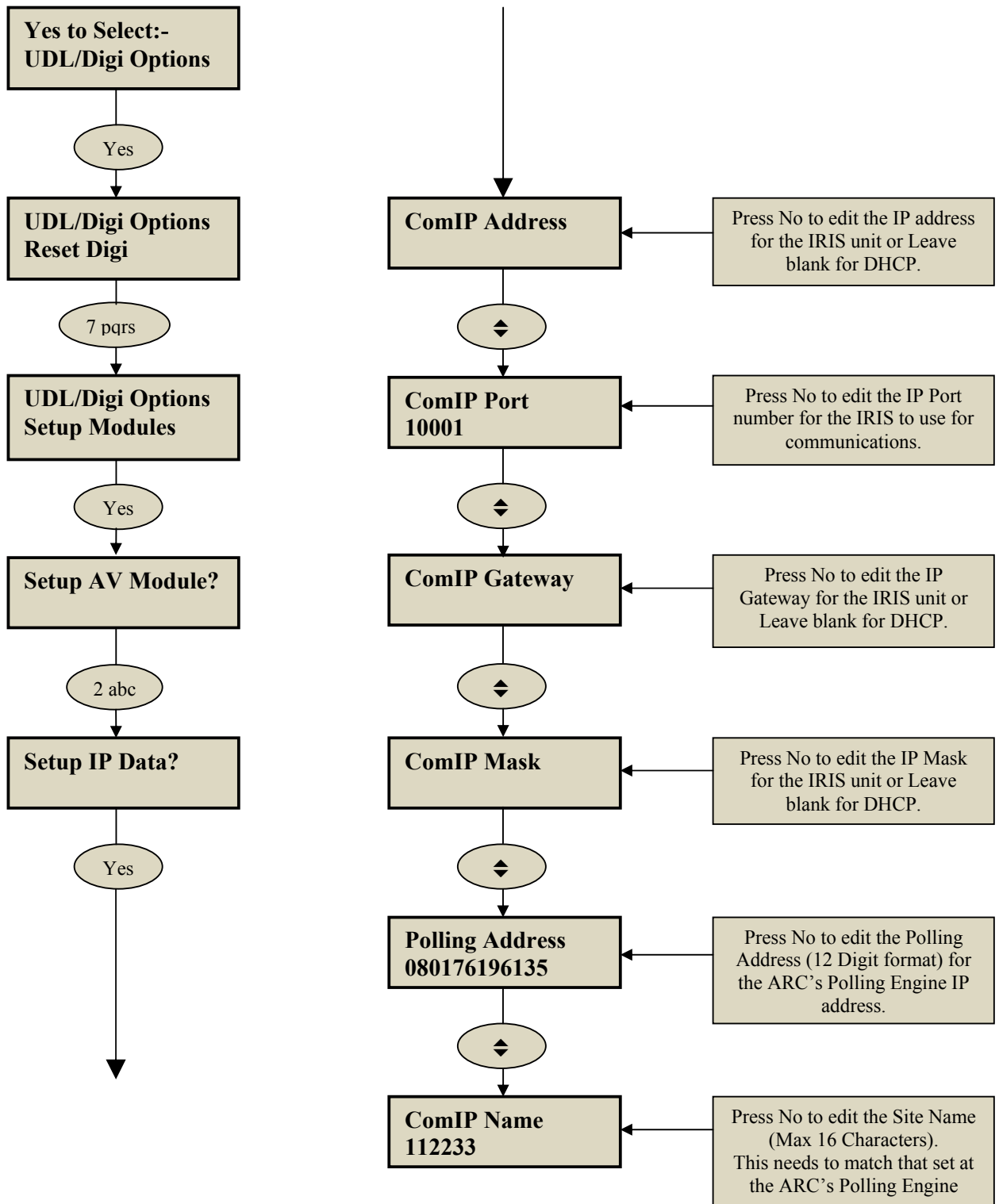
The following setup for the Texecom panel will allow the use of the IRIS Module for an Alarm and Upload / Download connection device:

UDL/DIGI Options:

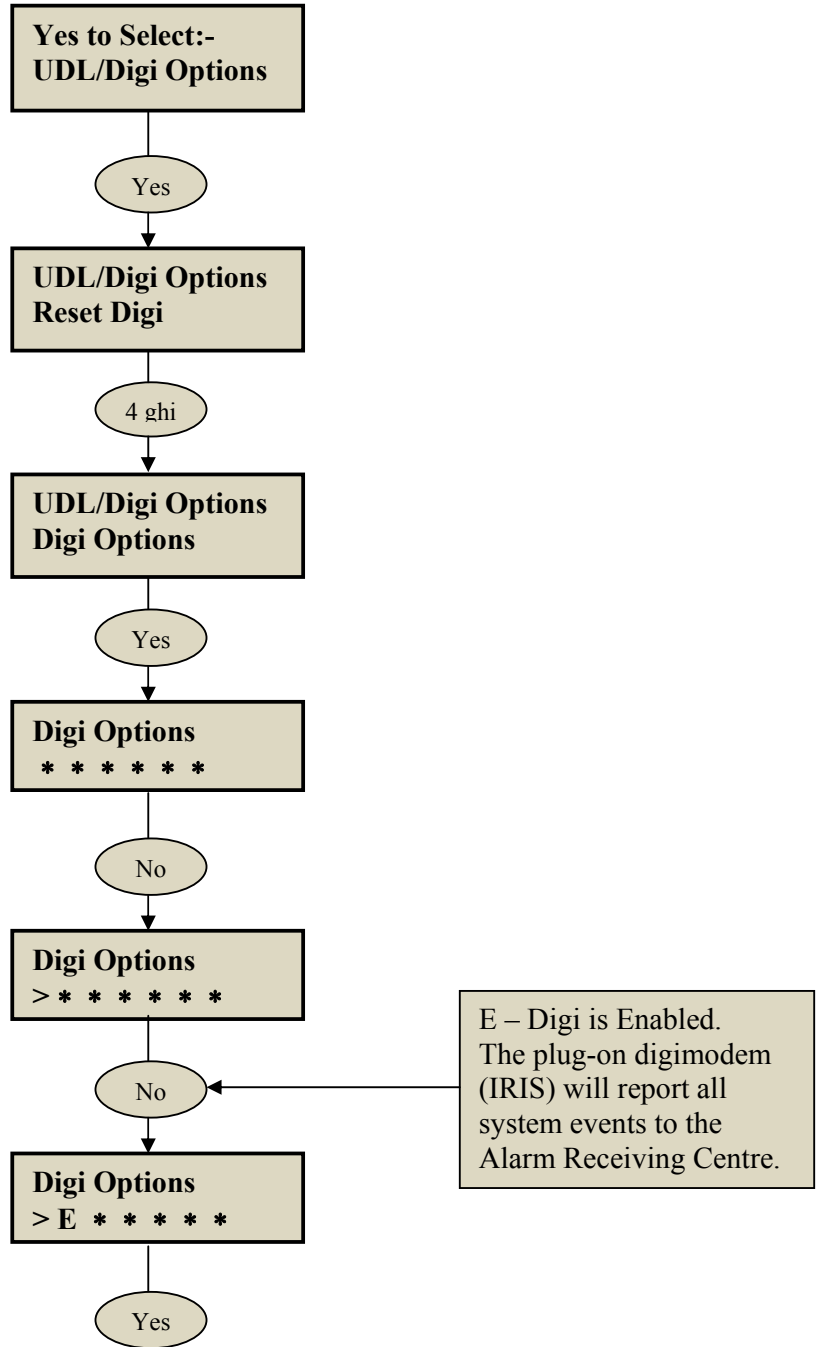
Com Port Setup:



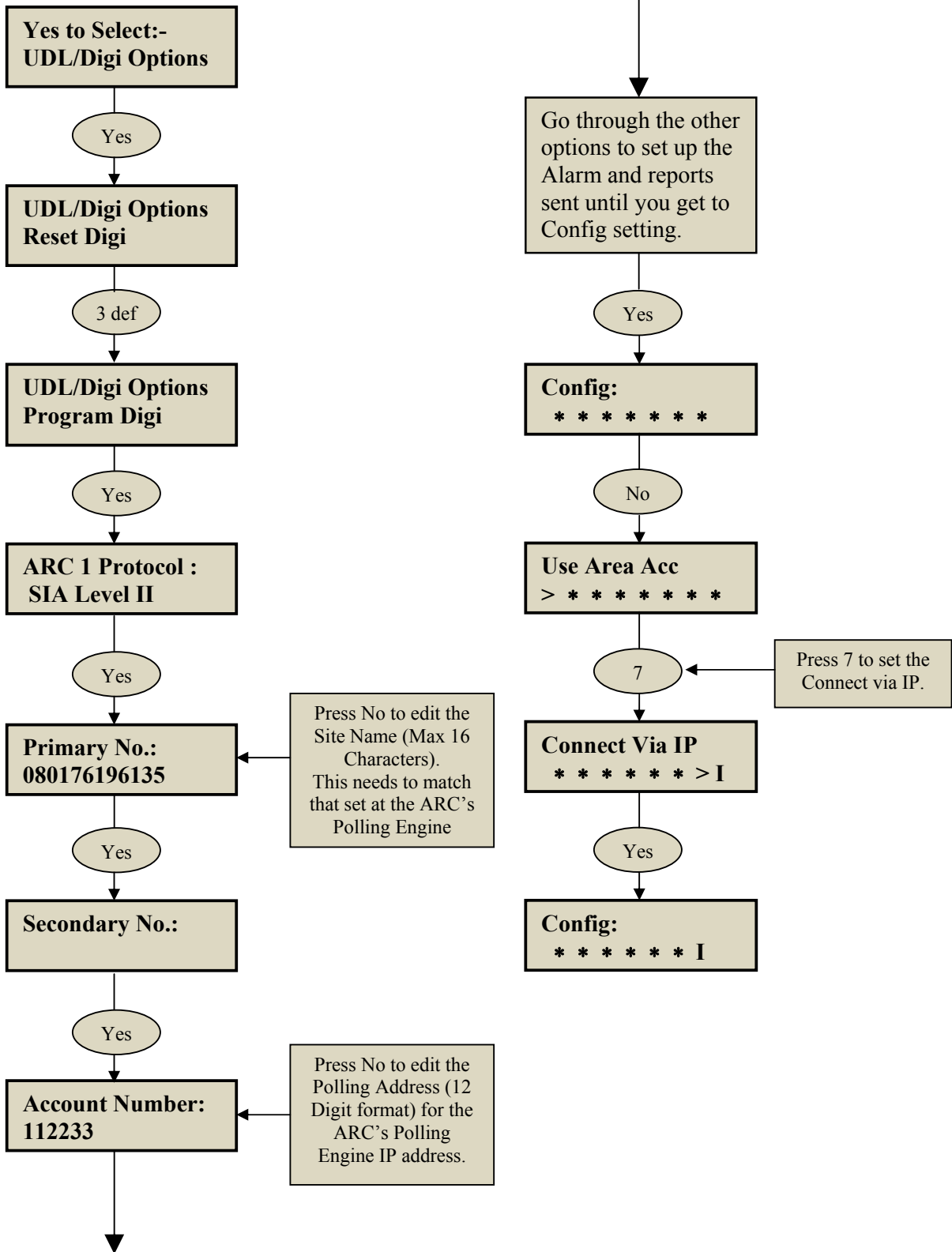
Setup Modules:



Digi Options:



Program Digi:



Cable Pin assignments for the IRIS serial port to the PC-COM (RS232) module detail below:

**IRIS Dialler
(9 Way Dtype Male)**

**PC-COM (RS232)
(9 way Dtype Male)**

Pin 1 -----		Pin 4
Pin 2 -----		Pin 3
Pin 3 -----		Pin 2
Pin 4 -----		Pin 1
Pin 5 -----		Pin 5
Pin 6	Not Connected	Pin 6
Pin 7 -----		Pin 8
Pin 8 -----		Pin 7
Pin 9 -----		Pin 9

Wintex UDL Software setup:

Create the site with in the Wintex software and set the Network details for that account as followed:

Network Details:

Host Address: 10.1.147.16 This will be the IP address (Public) for the IRIS unit on the customer site.

Host Port: 10001 The IP port number that is used by the Upload / Download communications and needs to match the ComIP Port setup in the panel.

The screenshot shows the 'Edit Account Details' window with the 'Panel Details' tab selected. The 'Network Details' section is highlighted, showing the following configuration:

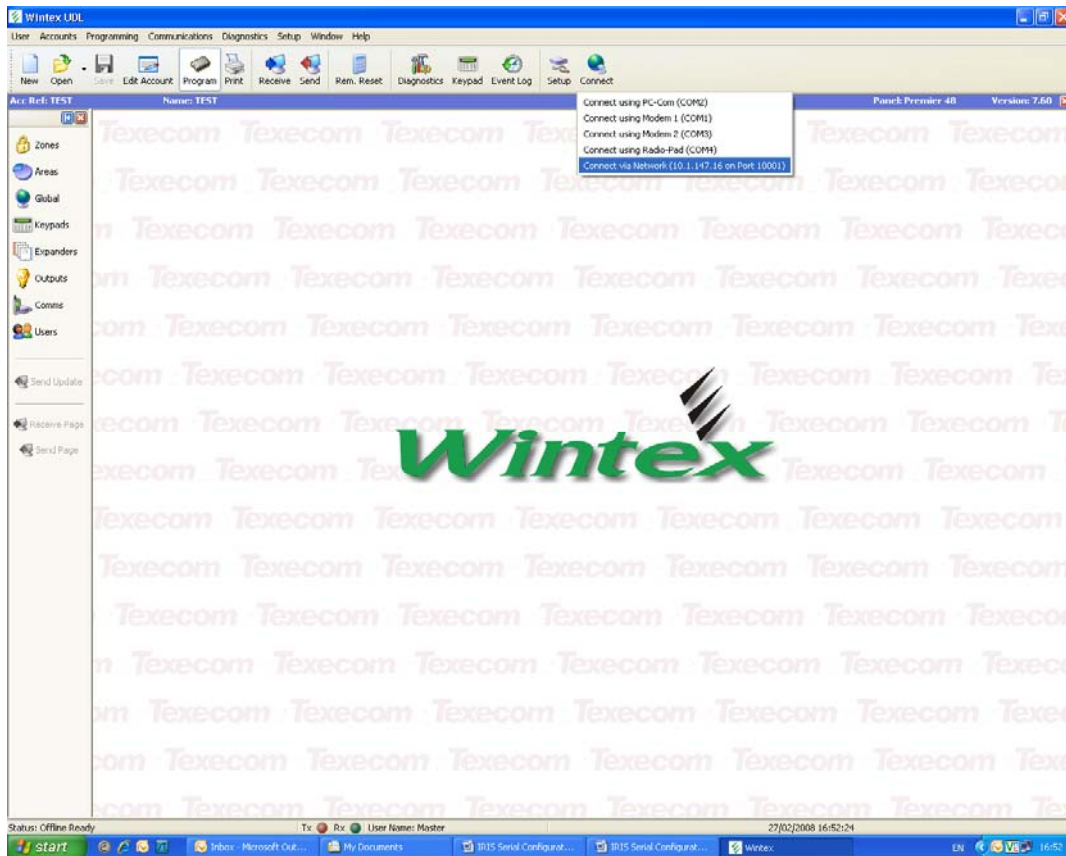
- Host Address: 10.1.147.16
- Host Port: 10001
- Connect via: [Redacted] SMG

Other visible details in the 'Panel Details' section include:

- Panel Type: Premier 48
- Software Version: 7.x
- Serial Number: 2119777
- UDL Password: 1234
- Date Installed: 25/01/2008
- LCD Display Type: International
- Country: Belgium
- Panel Modem Type: Onboard/Com300
- Panel Tel No: [Empty]
- Always Connect at 300 Baud:
- Enable 2-Call Answer Phone Defeat:
- Radio-Pad NUA: 23533900
- Radio-Pad ESN: [Empty]
- Include Zone Text on Send/Receive:
- Include All Zones on Send/Receive:
- Include All Radio Config when Sending Data:

Buttons at the bottom include Print, OK, Cancel, and Help.

To connect the Upload / Download software select and open the account you want to connect, and then click on the “connect” icon and select “Connect via Network (10.1.147.6 on Port 10001)”



If all configuration and setup followed you should now have the connection made and can use the software as intended.

If you have any questions regarding this setup or any other question on the Chiron setup, please fill free to contact any member of the Chiron organisation for help.